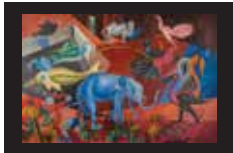


DEPERO INSTALLATION CHECKLIST

All works by Fortunato Depero unless otherwise noted

MAIN GALLERY

SOUTH WALL / WEST



Flora e fauna magica, 1920
(*Magical Flora and Fauna*)
oil on canvas
130 x 198 cm.

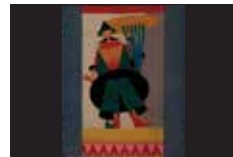


Io e mia moglie, 1919
(*My Wife and I*)
oil on canvas
113 x 95 cm.



Maschera-farfalla, 1921
(*Mask-Butterfly*)
pieced wool on cotton backing
56 x 55 cm.

SOUTH WALL / EAST



Mandarino con ombrello, 1919
(*Mandarin with Umbrella*)
pieced wool on cotton backing
64.5 x 53 cm.

WEST WALL



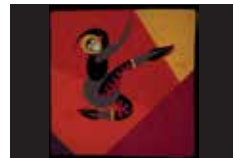
Insetto, 1920
(*Insect*)
pieced wool on cotton backing
38.5 x 45 cm.



Paese di tarantelle, 1918
(*Land of Tarantellas*)
oil on canvas
117 x 187 cm.



Cavalcata fantastica, 1920
(*Fantastical Ride*)
pieced wool on burlap backing
376 x 237 cm.



Diavolo di caucciù, 1920
(*Rubber Devil*)
pieced wool on cotton backing
60.5 x 60 cm.



Due maschere tropicali, 1920
(*Two Tropical Masks*)
pieced wool on cotton backing
138 x 98 cm.

SCULPTURES

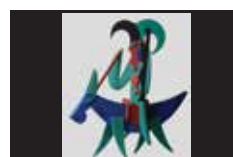


Testa, 1923
(*Head*)
painted wood
28 cm. h.

EAST WALL



Bambina e marinaio, 1917
(*Young Girl and Sailor*)
pieced wool on cotton backing
79 x 78 cm.



Cavaliere piumato, 1923
(*Plumed Knight*)
painted wood
97 cm. h.



Città meccanizzata dalle ombre, 1920
(*City Mechanized by Shadows*)
oil on canvas
119 x 188 cm.



Selvaggio, 1919
(*Little Wild Thing*)
painted wood
25.5 cm.

HALL

WEST WALL at north end



Ballerina, 1916/17
(Dancer)
collage of colored papers
29 x 33 cm.



La pitonessa, signed 1924
(The Soothsayer)
collage of colored papers and ink
56.5 x 43.8 cm.



**Il cigno candido posteggiatore per
"Il giardino zoologico" di Cangiullo, 1920**
(The White Swan Parking Attendant
for Cangiullo's "Il giardino zoologico")
collage of colored papers
39.5 x 43 cm.

WEST WALL / CENTER



Il Circo, 1919
(The Circus)
pencil on paper
47 x 45 cm.



Il Giocoliere, 1919
(The Juggler)
pencil and ink on paper
13.5 x 13.5 cm.



**Figura, Architettura sintetica
di un uomo, 1917**
(A Figure, or Synthetic
Architecture of a Man)
charcoal on paper
31.5 x 21 cm.



Il musicista Alfredo Casella, 1917
(The musician Alfredo Casella)
charcoal on paper
47 x 34.5 cm.

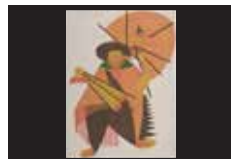


**Ritratto di Gilbert Clavel,
signed 1916, but 1917**
(Portrait of Gilbert Clavel)
charcoal on paper
60.3 x 26 cm.



Marinaio sintetico con pipa, 1917
(Synthetic Sailor with Pipe)
charcoal on paper
38 x 28 cm.

EAST WALL / NORTH END



**Mandarino per il "Canto
dell'Usignolo", 1916-17**
(Mandarin for Stravinsky's
"Song of the Nightingale")
collage of colored papers
64.5 x 53 cm.



**Costume per balletto di
Diaghilev, 1916-17**
(Costume for a Ballet by Diaghilev)
collage of colored papers
48 x 30 cm.



**Dama di corte cinese
per Diaghilev, 1917**
(Lady of the Chinese Court
for Diaghilev)
collage of colored papers
50 x 37 cm.

EAST WALL / CENTER



**Diavoletti di caucciù
a scatto, 1919**
(Little Rubber Devils)
oil on canvas
125 x 110 cm.



**Personaggi per
"Balli Plastici", 1918**
(Characters for "Balli Plastici")
pencil on paper
15.8 x 13.8 cm.



**Costumi per i
"Balli Plastici", 1918**
(Costumes for "Balli Plastici")
pencil on paper
15 x 21 cm.



Chimera, 1916
(Chimera)
ink and watercolour on paper
22.5 x 20 cm.



**Studi per i costumi di
"Chant du rossignol", 1916**
(Studies for Stravinsky's
"Song of the Nightingale" Costumes)
ink and pencil on paper
20.5 x 26.52 cm. and 19 x 23.5 cm.



**Dama di corte per Diaghilev,
1916-17**
(Lady of the Court for Diaghilev)
ink and pencil on paper
18.5 x 16.5 cm.



**Mandarino per "Chant du
rossignol", 1916-17**
collage of colored paper
48 x 30 cm.



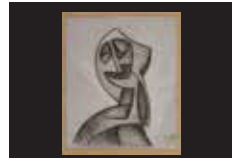
Depero's studio in Rome
with the stage sets for
Stravinsky's "Song of
the Nightingale", 1916
photographs

SOUTH GALLERY

EAST WALL



**Vecicliss—Astrazione
animale, 1915**
(Vecicliss—Animal Abstraction)
charcoal and white chalk on paper
43 x 67 cm.

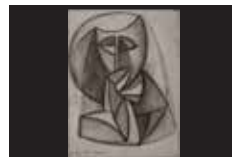


Scomposizione di testa, 1914
(Deconstruction of a Head)
charcoal, white chalk and ink
on grey paper
18.5 x 14.5 cm.

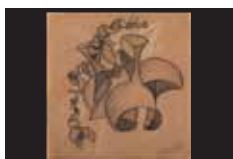
NORTH WALL



UMBERTO BOCCIONI
**Sviluppo di una bottiglia
nello spazio, 1913**
(Development of a Bottle in Space)
bronze
38 x 59.5 x 32 cm.



Scomposizione di testa, 1914
(Deconstruction of a Head)
charcoal, white chalk and ink
on grey paper
18.5 x 14.5 cm.



Bottiglia, 1916
(Bottle)
charcoal and white chalk
on brown paper
41 x 38.5 cm.



Linee-forza, 1914
(Force-Lines)
ink on paper
12.5 x 10 cm.



Uomo che cammina, 1914
(Man Walking)
 ink on paper
 17,5 x 10 cm.



Linee sintetiche di un uomo che getta un oggetto, 1914
(Synthetic Lines of a Man Throwing an Object)
 ink on paper
 11 x 10 cm.

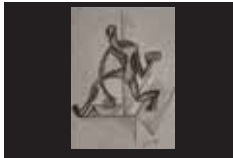


Figura umana stilizzata, 1914
(Stylized Human Figure)
 charcoal and white chalk on gray paper
 17 x 12,7 cm.

EAST WALL / SOUTH



FABIO MAURI
Schermo, 1968
(Screen)
 enamel on canvas
 100 x 170 x 7 cm.

WEST WALL / SOUTH

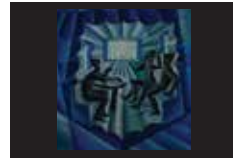


FABIO MAURI
 Video extract from "Gran serata futurista" performance held in Teatro Olimpico of Roma, 1982 (first performance at Teatro Comunale of L'Aquila, 1980), 37 min.

FELLOWS STUDIO



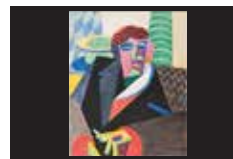
Doppio ritratto di Marinetti, 1923
(Double Portrait of Marinetti)
 collage of colored papers
 47 x 63 cm.



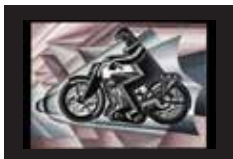
Spazialità lunari, o Convegno in uno smeraldo, 1924
(Lunar Space, or Meeting within an Emerald)
 oil on canvas
 100 x 95 cm.



Studio per Nitrito in velocità, 1932
(Study for Speeding Nitrite)
 ink on paper
 20 x 35 cm.



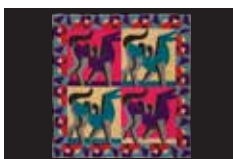
Ritratto di Gilbert Clavel, 1917
(Portrait of Gilbert Clavel)
 watercolor on paper
 30 x 25 cm.



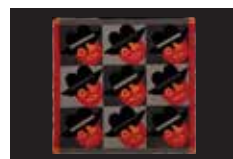
Motociclista, solido in velocità, 1927
(Biker, Solidified in Speed)
 oil on canvas
 117 x 163,5 cm.



Automati, Prospettiva dinamica figurata, 1917
(Automata, Dynamic Perspective with Figures)
 watercolor on paper
 62 x 40 cm.



Cavalli fiammanti, 1926
(Flaming Horses)
 pieced wool on cotton backing
 55 x 53 cm.



Nove teste con cappello, 1929-30
(Nine heads with Hat)
 pieced wool on cotton backing
 46 x 48 cm.

DINING AREA



Depero Futurista
(Futurist Depero),
Milan, Italy: Dinamo Azari, 1927
artist's book bound with bolts
Unbound and mounted on the wall

VITRINES

Left vitrine



Trentino,
*Rivista e bollettino
della legione trentina*
(July 1925)



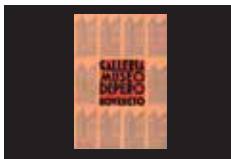
Depero Futurista
(the "bolted book", 1927)



Fortunato Depero,
Bilancio 1913-1936
(Rovereto, 1936)



Fortunato Depero,
So I think, So I paint
(Milan, New York, 1947)



Galleria Museo Depero Rovereto,
Il primo museo futurista d'Italia
(Rovereto, 1959)

Right vitrine



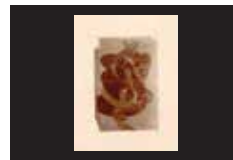
Fortunato Depero,
Liriche radiofoniche
(Editore Morreale, 1934)



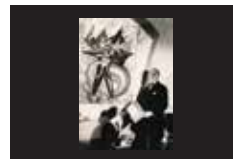
Three examples of Depero's
calling cards from his years
in New York City
(1928-30 and 1947-49)



Gilbert Clavel,
Un istituto per suicidi
Rome, Italy:
Bernardo Lux editore, 1918



Photograph of Fortunato Depero's
Pittura astratta, 1916.
The original painting is lost.



Photograph of F.T. Marinetti
and his wife Benedetta, Rome, 1932.
Benedetta holds a copy of Depero
Futurista with a special metal cover.
Behind is a portrait of Marinetti
by Depero.

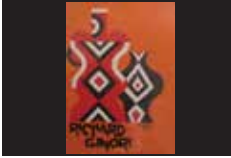
OFFICE



Il Mandarino, 1916
(*The Mandarin*)
collage of colored papers
39 x 31.5 cm.



Studio per Corteo della gran bambola, 1920
(*Study for The Procession of the Great Doll*)
pencil on paper
69 x 49.5 cm.



Examples of Depero's
magazine covers, 1920s



Studio per Cavalcata fantastica, 1920
(*Study for Fantastic Rider*)
pencil on paper
48 x 58.5 cm.



Depero and his wife Rosetta
and some workers in the
Casa d'Arte in Rovereto, 1920



Compenetrazione, 1915
(*Interpenetration*)
ink on paper
20 x 20.5 cm.