

MEDARDO ROSSO INSTALLATION CHECKLIST

All works by Medardo Rosso unless otherwise noted

MAIN GALLERY

SCULPTURES



from left:
Madame Noblet, 1913-1914
black wax over plaster, 68 x 50 x 27 cm
(26³/₁₆ x 19¹¹/₁₆ x 10⁵/₈ in)
Fondazione Musei Civici di Venezia,
Galleria Internazionale d'Arte Moderna
di Ca' Pesaro, Venice

Madame Noblet, 1897
bronze, 51 x 50 x 35 cm
(20⁷/₈ x 19¹¹/₁₆ x 13¹³/₁₆ in)
Galleria d'Arte Moderna di Milano

Madame Noblet, post 1914
plaster, 64.5 x 52.5 x 45.5 cm
(25³/₈ x 20¹¹/₁₆ x 17⁷/₈ in)
Museo Medardo Rosso, Barzio



from left:
Enfant Malade (Sick Boy), c. 1908
plaster, 17.5 x 20 x 19.3 cm
(6⁷/₈ x 7⁷/₈ x 7⁵/₈ in)
Museo Medardo Rosso, Barzio

Enfant Malade, 1889
wax over plaster,
27 x 25.4 x 18.4 cm
(10⁵/₈ x 10 x 7³/₁₆ in)
Raymond and Patsy Nasher
Collection, Nasher Sculpture Center,
Dallas, Texas



**Ecce Puer (Behold the Child),
post 1920**
dark plaster, 50 x 32.5 x 38.5 cm
(19¹¹/₁₆ x 12¹³/₁₆ x 15¹³/₁₆ in)
Museo Medardo Rosso, Barzio



Rieuse (Laughing Woman), 1902
wax, 26 x 13.5 x 10 cm
(10³/₁₆ x 5⁵/₁₆ x 3⁷/₈ in)
Fondazione Musei Civici di Venezia,
Galleria Internazionale d'Arte Moderna
di Ca' Pesaro, Venice

EAST WALL



**CY TWOMBLY, Untitled
(New York City), 1956**
oil based house paint, wax crayon
and pencil on canvas
© Cy Twombly Foundation,
The Sonnabend Collection Foundation,
50.8 x 121.9 cm (20 x 48 in)

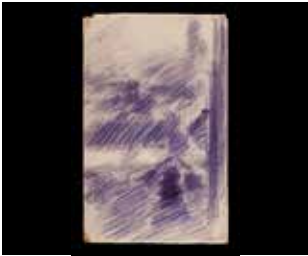
SOUTH WALL /EAST



Untitled, n.d.
pencil on paper,
12.7 x 9 cm (5 x 3½ in)
Private collection



Untitled, n.d.
pencil on paper,
20.9 x 9.5 cm (8⅓/16 x 3⅓/16 in)
Museo Medardo Rosso, Barzio
Inv. 445



Untitled, n.d.
pencil on paper,
21.5 x 13.6 cm (8½ x 5⅝ in)
Museo Medardo Rosso, Barzio
Inv. 311



Untitled, n.d.
pencil on paper,
11 x 15.1 cm (4⅝/16 x 5⅞/8 in)
Museo Medardo Rosso, Barzio
Inv. 421



Untitled, n.d.
red chalk on cardboard,
12.3 x 12.8 cm (4⅓/16 x 5 in)
Museo Medardo Rosso, Barzio
inv. 304



Untitled, n.d.
pencil on paper,
10.4 x 15 cm (4⅓/8 x 5⅞/8 in)
Museo Medardo Rosso, Barzio
Inv. 423



Untitled, n.d.
pencil on envelope,
15.1 x 8.1 cm (5⅞/8 x 3⅓/16 in)
Museo Medardo Rosso, Barzio
Inv. 213



Untitled, n.d.
pencil on paper,
13.3 x 20.5 cm (5⅓/16 x 8⅞/8 in)
Museo Medardo Rosso, Barzio
Inv. 422



Untitled, n.d.
pencil on paper,
20.5 x 13.4 cm (8⅞/8 x 5⅝/16 in)
Museo Medardo Rosso, Barzio
Inv. 441



Untitled, n.d.
ink on paper,
11.3 x 16.4 cm (4⅞/8 x 6½ in)
Museo Medardo Rosso, Barzio
Inv. 416



Untitled, n.d.
pencil on paper,
15.1 x 10.9 cm (5⁷/₈ x 4⁵/₁₆ in)
Private collection



Untitled, n.d.
ink on paper,
12.3 x 10.5 cm (4¹³/₁₆ x 4¹/₈ in)
Museo Medardo Rosso, Barzio
Inv. 419

SOUTH WALL /WEST



Untitled, n.d.
pencil on envelope,
10.4 x 7.1 cm (4¹/₈ x 2¹³/₁₆ in)
Museo Medardo Rosso, Barzio
Inv. 205



Untitled, n.d.
pencil on cardboard,
12.8 x 9 cm (5 x 3¹/₂ in)
Museo Medardo Rosso, Barzio
Inv. 203



Untitled, n.d.
charcoal on paper,
20.5 x 13.3 cm (8¹/₈ x 5³/₁₆ in)
Private collection



Untitled, n.d.
pencil on paper,
17.6 x 13.4 cm (6⁷/₈ x 5⁵/₁₆ in)
Private collection



Untitled, n.d.
pencil on cardboard,
9.3 x 6.5 cm (3¹¹/₁₆ x 2¹/₂ in)
Museo Medardo Rosso, Barzio
Inv. 210



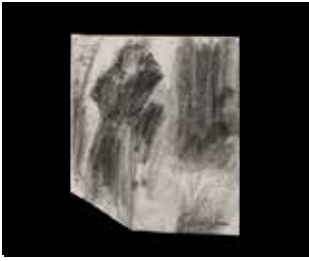
Untitled, n.d.
pencil on paper,
26.5 x 17.8 cm (10³/₈ x 7 in)
Private collection



Untitled, n.d.
pencil on cardboard,
15 x 9.9 cm (5⁷/₈ x 3⁷/₈ in)
Museo Medardo Rosso, Barzio
Inv. 202



Untitled, n.d.
pencil on paper,
26.9 x 17.9 cm (10⁵/₈ x 7 in)
Private collection



Untitled, n.d.
pencil on cardboard,
11.4 x 9.7 cm (4½ x 3¹³/₁₆ in)
Museo Medardo Rosso, Barzio
Inv. 207



Untitled, n.d.
pencil on cardboard,
15.2 x 7.5 cm (5 x 2⁷/₈ in)
Museo Medardo Rosso, Barzio
Inv. 206



Untitled, n.d.
pencil on cardboard,
11 x 9 cm (4⁵/₁₆ x 3½ in)
Museo Medardo Rosso, Barzio
Inv. 307

WEST WALL



Untitled, s.d.
pencil on envelope,
9 x 13.5 cm (3½ x 5⁵/₁₆ in)
Museo Medardo Rosso, Barzio
Inv. 427



Donna al Balcone
(Woman on a Balcony), s.d.
pencil on cardboard,
12.8 x 7.2 cm (5 x 2¹³/₁₆ in)
Museo Medardo Rosso, Barzio
Inv. 309



Untitled, s.d.
pencil on envelope,
11.2 x 18 cm (4³/₈ x 7⁷/₈ in)
Museo Medardo Rosso, Barzio
Inv. 430



Cheval qui Monte la Route
(Horse Going Up the Street), s.d.
pencil on paper, mounted
on cardboard,
20 x 11.5 cm (7⁷/₈ x 4½ in)
Museo Medardo Rosso, Barzio
Inv. 440

HALL

EAST WALL /CENTER



Madame Noblet, Enfant malade
(Sick Boy), and Impression de
boulevard: Paris la nuit (Impression
of the Boulevard: Paris by Night)
in the studio on the Boulevard des
Batignolles, Paris, c. 1899
Photographic enlargement
of a vintage photograph
by Medardo Rosso



Impressione d'omnibus
(Impression of an Omnibus),
1884-1889
vintage photograph,
18.8 x 24.8 cm (7³/₈ x 9¹³/₁₆ in)
Private collection

RIGHT VITRINE - TOP ROW



Impressione d'omnibus
(Impression of an Omnibus),
detail, n.d.
vintage photograph,
mounted on cardboard,
11 x 7.3 cm ($4\frac{5}{16}$ x $2\frac{7}{8}$ in)
Private collection



Impressione d'omnibus,
detail, n.d.
vintage photograph,
7.8 x 5.5 cm (3 x $2\frac{3}{16}$ in)
Private collection



Impressione d'omnibus,
detail, n.d.
vintage photograph,
11.7 x 8.9 cm ($4\frac{5}{8}$ x $3\frac{1}{2}$ in)
Private collection



Impressione d'omnibus,
detail, n.d.
vintage photograph,
8.7 x 5.3 cm ($3\frac{3}{8}$ x 2 in)
Private collection



Impressione d'omnibus,
detail, n.d.
vintage photograph,
7.7 x 17.9 (3 x 7 in)
Private collection



Impressione d'omnibus,
detail, n.d.
vintage photograph,
7 x 5.6 cm ($2\frac{11}{16}$ x $2\frac{3}{16}$ in)
Private collection



Impressione d'omnibus,
detail, n.d.
vintage photograph,
7.4 x 8.6 cm ($2\frac{7}{8}$ x $3\frac{5}{16}$ in)
Private collection

RIGHT VITRINE - BOTTOM ROW



Impressione d'omnibus
(Impression of an Omnibus),
detail, c. 1915
vintage photograph,
18 x 12.2 cm (7 x $4\frac{13}{16}$ in)
Private collection



Impressione d'omnibus,
detail, n.d.
vintage photograph,
17.2 x 11.9 cm ($6\frac{13}{16}$ x $4\frac{11}{16}$ in)
Private collection



Impressione d'omnibus, detail, n.d.
vintage photograph,
17.6 cm x 13.1 cm (6⁷/₈ x 5¹³/₁₆ in)
Private collection



Impressione d'omnibus, detail, n.d.
vintage photograph,
9.4 x 12.5 cm (3¹¹/₁₆ x 4⁷/₈ in)
Private collection



Impressione d'omnibus, detail, n.d.
vintage photograph,
14 x 10.5 cm (5¹/₂ x 4¹/₈ in)
Private collection



Impressione d'omnibus, detail, n.d.
vintage photograph,
8.2 x 9 cm (3³/₁₆ x 3¹/₂ in)
Private collection



Impressione d'omnibus, detail, n.d.
vintage photograph,
7 x 8.7 cm (2¹³/₁₆ x 3³/₈ in)
Private collection

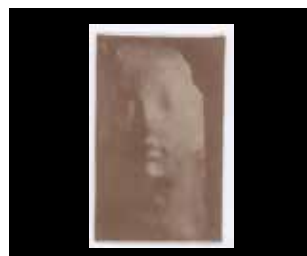


Impressione d'omnibus, detail, n.d.
vintage photograph,
9.8 x 12 cm (3⁷/₈ x 4¹¹/₁₆ in)
Private collection

LEFT VITRINE



Ecce Puer (Behold the Child), c. 1910-1915
vintage photograph
mounted on cardboard,
10.1 x 5.5 cm (3 x 2¹/₈ in)
Private collection



Ecce Puer, c. 1911-1914
vintage photograph,
14.3 x 8.8 cm (5⁵/₈ x 3¹/₂ in)
Private collection



Ecce Puer, c. 1911-1914
vintage photograph,
13.4 x 8.6 cm (5³/₁₆ x 3³/₈ in)
Private collection



Ecce Puer, c. 1911-1914
vintage photograph,
15 x 10.2 cm (5⁷/₈ x 4 in)
Private collection



Ecce Puer, c. 1911-1914
vintage photograph,
15.1 x 10.1 cm (5⁷/₈ x 3 in)
Private collection



Ecce Puer, c. 1911-1914
vintage photograph,
12.5 x 6.9 cm (4⁷/₈ x 2¹¹/₁₆)
Private collection



Ecce Puer, c. 1911-1914
vintage photograph,
14.6 x 7.4 cm (5¹¹/₁₆ x 2⁷/₈ in)
Private collection

WEST WALL /NORTH END



Madame Noblet, after 1901
vintage photograph,
mounted on cardboard,
4 x 4.5 cm (1⁵/₈ x 1¹³/₁₆ in)
Private collection



Madame Noblet, after 1901
vintage photograph,
5 x 6 cm (2 x 2³/₈ in)
Private collection



Madame Noblet, 1907-1908
vintage photograph, mounted
on a photo album page,
15.9 x 9.4 cm (6⁵/₁₆ x 3¹¹/₁₆ in)
Private collection

WEST WALL/SOUTH END



Enfant malade (Sick Boy), c. 1909
vintage photograph,
retouched with tempera,
7.9 x 6.3 cm (3¹/₈ x 2¹/₂ in)
Private collection



Enfant malade, c. 1901-1902
vintage photograph, retouched
with watercolor,
41.4 x 33.5 cm (16⁵/₁₆ x 13³/₁₆ in)
Private collection



Enfant malade, c. 1924
 vintage photograph, mounted
 on bluish notepaper with ink blot,
 9.4 x 6.3 cm (3¹¹/₁₆ x 2¹/₂ in)
 Private collection



Enfant malade, c. 1910
 vintage photograph,
 16.9 x 10.3 cm (6¹¹/₁₆ x 4¹/₈ in)
 Private collection



**Rieuse (Laughing Woman),
 c. 1930s**
 Reprint from the vintage
 original of c. 1910,
 6.1 x 6.1 cm (2³/₈ x 2³/₈ in)
 Private collection

SOUTH GALLERY

SCULPTURE



**La Conversazione
 (The Conversation), 1903**
 plaster, 35 x 66.5 x 41 cm
 (13¹³/₁₆ x 26³/₁₆ x 16¹/₈ in)
 Museo Medardo Rosso, Barzio

WALLS



La Conversazione, n.d.
 vintage photograph,
 mounted on paper,
 22.2 x 14 cm (8¹¹/₁₆ x 5¹/₂ in)
 Private collection



La Conversazione, before 1902
 vintage photograph,
 10.4 x 14 cm (4¹/₈ x 5¹/₂ in)
 Private collection



La Conversazione, n.d.
 vintage photograph,
 4.5 x 5.5 cm (1¹³/₁₆ x 2³/₁₆ in)
 Private collection



La Conversazione, c. 1904
 vintage photograph,
 8.2 x 9.7 cm (3³/₁₆ x 3¹³/₁₆ in)
 Private collection



La Conversazione, c. 1904
vintage photograph,
mounted on cardboard,
11.9 x 7.7 cm (4¹¹/₁₆ x 3 in)
Private collection



CY TWOMBLY, *Idilion*, 1976
Diptych, graphite, watercolor,
vellum and paper collage on paper,
47.6 x 62.2 cm (18¹¹/₁₆ x 24¹/₂ in);
147.3 x 101.6 cm (58 x 40 in)
Private collection



Impression de boulevard:
Paris la nuit (Impression of
the Boulevard: Paris by Night)
in the studio on the Boulevard
des Batignolles, Paris c. 1906
Photographic enlargement
of a vintage photograph
by Medardo Rosso

OFFICE



Untitled, n.d.
pen on paper,
21 x 13.5 cm (8⁵/₁₆ x 5⁵/₁₆ in)
Private collection



Untitled, n.d.
brown pen on paper,
14 x 21.5 cm (5¹/₂ x 8¹/₂ in)
Museo Medardo Rosso, Barzio



Untitled, n.d.
brown pen on paper,
11.2 x 20.3 cm (4³/₈ x 8 in)
Museo Medardo Rosso, Barzio

REAR GALLERY

SCULPTURES



from left:
Bookmaker, 1914-1923
wax over plaster, 48 x 43 x 46 cm
(18⁷/₈ x 16⁷/₈ x 18⁷/₈ in)
Museo Medardo Rosso, Barzio

Bookmaker, 1894
dark plaster, 45.3 x 33.2 x 36 cm
(17¹³/₁₆ x 13¹/₈ x 14³/₁₆ in)
Private collection



Enfant au sein
(Child at the Breast), 1910-1914
bronze, 50 x 45 x 20 cm
(19¹¹/₁₆ x 17¹¹/₁₆ x 7⁷/₈ in)
Museo Medardo Rosso, Barzio

WALLS



Self Portrait, c. 1914
vintage photograph,
12 x 9 cm ($4\frac{13}{16}$ x $3\frac{1}{2}$ in)
Private collection



Self Portrait, c. 1914
vintage photograph,
4.8 x 2.5 cm ($1\frac{13}{16}$ x 1 in)
Private collection



Self Portrait, c. 1914
vintage photograph,
6.1 x 9 cm ($2\frac{3}{8}$ x $3\frac{1}{2}$ in)
Private collection



Bookmaker, c. 1910-1920
vintage photograph,
13.8 x 7.6 cm ($5\frac{3}{8}$ x 3 in)
Private collection



Self Portrait, c. 1914
vintage photograph,
5.3 x 6.5 cm ($2\frac{1}{8}$ x $2\frac{1}{2}$ in)
Private collection



Bookmaker, c. 1910-1920
vintage photograph,
12.9 x 6.6 cm ($5\frac{1}{8}$ x $2\frac{5}{8}$ in)
Private collection



Self Portrait, c. 1914
vintage photograph,
7.4 x 5.1 cm ($2\frac{7}{8}$ x 2 in)
Private collection



Bookmaker, c. 1910-1920
vintage photograph,
7.7 x 4.7 cm (3 x $1\frac{13}{16}$ in)
Private collection



Self Portrait, c. 1914
vintage photograph,
7.1 x 5.8 cm ($2\frac{13}{16}$ x $2\frac{5}{16}$ in)
Private collection



Bookmaker, n.d.
vintage photograph,
5.6 x 2.9 cm ($2\frac{3}{16}$ x $1\frac{1}{8}$ in)
Private collection



Bookmaker, c. 1910-1920
vintage photograph,
10.2 x 5.3 cm (4 x 2¹/₈ in)
Private collection



Enfant au sein, 1923
vintage photograph,
mounted on paper,
27.2 x 22 cm (10¹¹/₁₆ x 8¹¹/₁₆ in)
Private collection



Bookmaker, c. 1910-1920
vintage photograph,
12.9 x 6.6 cm (5¹/₈ x 2⁵/₈ in)
Private collection



Enfant au sein, n.d.
vintage photograph,
17.9 x 12.9 cm (7 x 5¹/₈ in)
Private collection



Docteur Fles's portrait, 1901
Photographic enlargement
of a vintage photograph



*Bookmaker in the studio
on rue Cauchois, 1901*
vintage photograph,
9.2 x 5.1 cm (3⁵/₈ x 2 in)
Private collection

DINING AREA

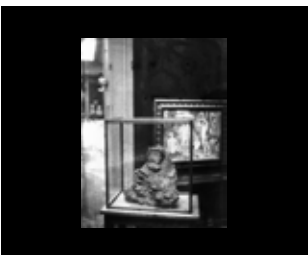
WALLS (FROM LEFT TO RIGHT)



*Assemblage of Portinaia
(The Concierge),
Enfant au soleil (Boy in the Sun),
Madame Noblet, 1904*
modern contact print from
original glass plate negative,
24 x 30.5 cm (9³/₈ x 12 in)
Private collection



*Madame Noblet exhibited at the
Exposition Universelle of 1900, Paris*
modern contact print from
an original glass plate negative,
24 x 18 cm (9³/₈ x 7¹/₈ in)
Private collection



*Enfant à la bouchée de pain
(Child in the Soup Kitchen) exhibited
at the Salon d'Automne of 1904, Paris*
modern contact print from
an original glass plate negative,
30.5 x 24 cm (12 x 9³/₈ in)
Private collection



Rieuse (Laughing Woman), c. 1907
modern contact print from
an original glass plate negative,
18 x 24 cm (7¹/₈ x 9³/₈ in)
Private collection



Carne altrui (Flesh of Others) and Madonna Medici exhibited at the Salon d'Automne of 1904, Paris
modern contact print from an original glass plate negative, 18 x 24 cm (7¹/₈ x 9³/₈ in)
Private collection



Bookmaker in the studio on the Boulevard des Batignolles, Paris, c. 1901
modern contact print from an original glass plate negative, 17.8 x 13 cm (7 x 5¹/₈ in)
Private collection



Memnone (Memnon), Enfant au soleil (Boy in the Sun), Carne altrui (Flesh of Others) and Madonna Medici exhibited at the Salon d'Automne of 1904, Paris
modern contact print from an original glass plate negative, 24 x 30.5 cm (9³/₈ x 12 in)
Private collection



Rieuse (Laughing Woman) in front of a screen in the studio on the Boulevard des Batignolles, Paris, c. 1902
modern contact print from an original glass plate negative, 24 x 18 cm (9³/₈ x 7¹/₈ in)
Private collection



Portinaia (The Concierge), Henri Rouart and Madame Noblet exhibited at the Salon d'Automne of 1904, Paris
modern contact print from an original glass plate negative, 24 x 30.5 cm (9³/₈ x 12 in)
Private collection



Grande Rieuse (Large Laughing Woman) in the studio on the Boulevard des Batignolles, Paris, 1896-1899
modern contact print from an original glass plate negative, 18 x 13 cm (7¹/₈ x 5¹/₈ in)
Private collection



Madame Noblet in the studio on the Boulevard des Batignolles, Paris, 1897
modern contact print from an original glass plate negative, 16.5 x 12.7 cm (6¹/₂ x 5 in)
Private collection



Malato all'ospedale (Patient in Hospital), Bambina ridente (Laughing Girl), Femme à la voilette (Lady with a Veil), and Enfant juif (Jewish Boy) in the house of Etha Fles, Utrecht, c. 1901
modern contact print from an original film negative, 13.5 x 18 cm (5³/₈ x 7¹/₈ in)
Private collection



Enfant malade (Sick Boy) in the studio on the Boulevard des Batignolles, Paris, 1898
modern contact print from an original glass plate negative, 24 x 18 cm (9³/₈ x 7¹/₈ in)
Private collection



Madame X in the studio on the Boulevard des Batignolles, Paris, c. 1900
modern contact print from an original glass plate negative, 24 x 18 cm (9³/₈ x 7¹/₈ in)
Private collection



Ecce Puer (Behold the Child)
in the studio on the Boulevard
des Batignolles, Paris, 1906
modern contact print from
an original glass plate negative,
24 x 18 cm (9³/₈ x 7¹/₈ in)
Private collection



Henri Rouart in the studio on
the Boulevard des Batignolles,
Paris, c. 1910
modern contact print from
an original glass plate negative,
24 x 18 cm (9³/₈ x 7¹/₈ in)
Private collection



Enfant au soleil (Boy in the Sun)
and Ecce Puer (Behold the Child)
in the studio on the Boulevard
des Batignolles, Paris, c. 1908-1913
modern contact print from
an original film negative,
17.3 x 12.8 cm (6¹³/₁₆ x 5 in)
Private collection



Henri Rouart and Enfant à la bouchée
de pain (Child in the Soup Kitchen)
in the studio on the Boulevard des
Batignolles, Paris, c. 1904
modern contact print from
an original glass plate negative,
24 x 18 cm (9³/₈ x 7¹/₈ in)
Private collection