



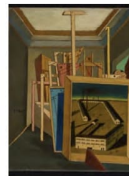
GIORGIO DE CHIRICO - GIULIO PAOLINI GIULIO PAOLINI - GIORGIO DE CHIRICO

OCTOBER 14, 2016 - JUNE 24, 2017

MAIN GALLERY



Giorgio de Chirico
La ricompensa dell'indovino
[The Soothsayer's Recompense], 1913
Oil on canvas
Philadelphia Museum of Art:
The Louise and Walter Arensberg
Collection, 1950



Giorgio de Chirico
Interno metafisico
(con piccola officina)
[Metaphysical Interior
(with Small Factory)], 1917
Oil on canvas
Private Collection



Giulio Paolini
Melanconia ermetica
[Hermetic Melancholy], 1983
Pencil on paper, plaster cast,
collage on wall, matte white basis
The Rose Collection and
The Rachofsky Collection



Giorgio de Chirico
Ettore e Andromaca
[Hector and Andromache], 1917
Oil on canvas
Private Collection



Giulio Paolini
Mimesi
[Mimesis], 1975
Plaster casts with matte white bases
Fondazione Giulio e Anna Paolini,
Turin, Italy



Giorgio de Chirico
Le muse inquietanti
[The Disquieting Muses], 1918
Oil on canvas
Private Collection



Giulio Paolini
Interno metafisico
[Metaphysical Interior], 2009-16
Collage on paper in Plexiglas
frame, white painted wood frame,
and pencil and collage on wall
Collection of the Artist



Giorgio de Chirico
L'énigme de l'heure
[The Enigma of the Hour],
1910-1911
Oil on canvas
Private Collection

HALLWAY - NORTH SIDE



Giulio Paolini
Contatto
[Contact], 1969
Photo emulsion on canvas
Private Collection



Giorgio de Chirico
Autoritratto
[Self-Portrait], 1924
Tempera on canvas
Private Collection, Courtesy
Galleria dello Scudo, Verona, Italy



Giulio Paolini
Controfigura (critica del punto di vista)
[Stand-in (A Critique of the Viewpoint)], 1981
Photo emulsion on canvas
Fondazione Giulio e Anna Paolini,
Turin, Italy



Giorgio de Chirico
Autoritratto con testa di Mercurio
[Self-Portrait with Head of Mercury], 1923
Tempera on canvas
Private Collection

HALLWAY - SOUTH SIDE



Giulio Paolini
Et quid amabo nisi quod aenigma est?
[What Shall I Love if Not the Enigma?], 1969-70
Collage on paper
Collection of the Artist



Giorgio de Chirico
Autoritratto con tavolozza
[Self-Portrait with Palette], 1954
Oil on canvas
Galerie Andrea Caratsch,
St. Moritz, Switzerland



Giulio Paolini
1/25/71, 1965-71
Photo emulsion on canvas
MAXXI. National Museum
of XXI Century Arts, Rome, Italy



Giorgio de Chirico
Se Ipsum
[Himself], 1948
Ink and gouache on paper
Giulio Paolini Collection



Giorgio de Chirico
Doppio autoritratto in cornice
[Double Self-Portrait in Frame], 1955
Oil on canvas
Galerie Andrea Caratsch,
St. Moritz, Switzerland

BACK GALLERY



Giulio Paolini
Doppia verità
[Double Truth], 1995
Plaster casts, Plexiglas cases with mirrored side, matte white base
The Collection of Barbara Bluhm-Kaul and Don Kaul, Chicago, USA



Giulio Paolini
Ritratto dell'artista come modello
[Portrait of the Artist as a Model], 1980
Lithograph
Collection of the Artist



Giulio Paolini
Autoritratto
[Self-Portrait], 1970
Pencil on photo emulsion on canvas
Private Collection



Giulio Paolini
Anna-logia
[Anna-logy], 1966
Primed canvases, photo emulsion, nylon monofilament
Private Collection

STUDIO ROOM



Giorgio de Chirico
Gladiateurs / L'inutile victoire
[Gladiators / The Useless Victory], 1927
Oil on canvas
Nahmad Collection, Monaco



Giulio Paolini
Ante litteram
[Ahead of Its Time], 1985
Plaster casts, Plexiglas case, matte white base
Courtesy Marian Goodman Gallery, New York, USA



Giorgio de Chirico
Gladiateurs et fauves / La douce mort
[Gladiators and Beasts / The Sweet Death], 1927-1929
Oil on canvas
Nahmad Collection, Monaco



Giulio Paolini
Arianna, 1982
Photo emulsion on canvas
Private Collection



Giorgio de Chirico
Gladiateurs
[Gladiators], 1928
Oil on canvas
Nahmad Collection, Monaco

DINING AREA



1



2



3



4



5



6



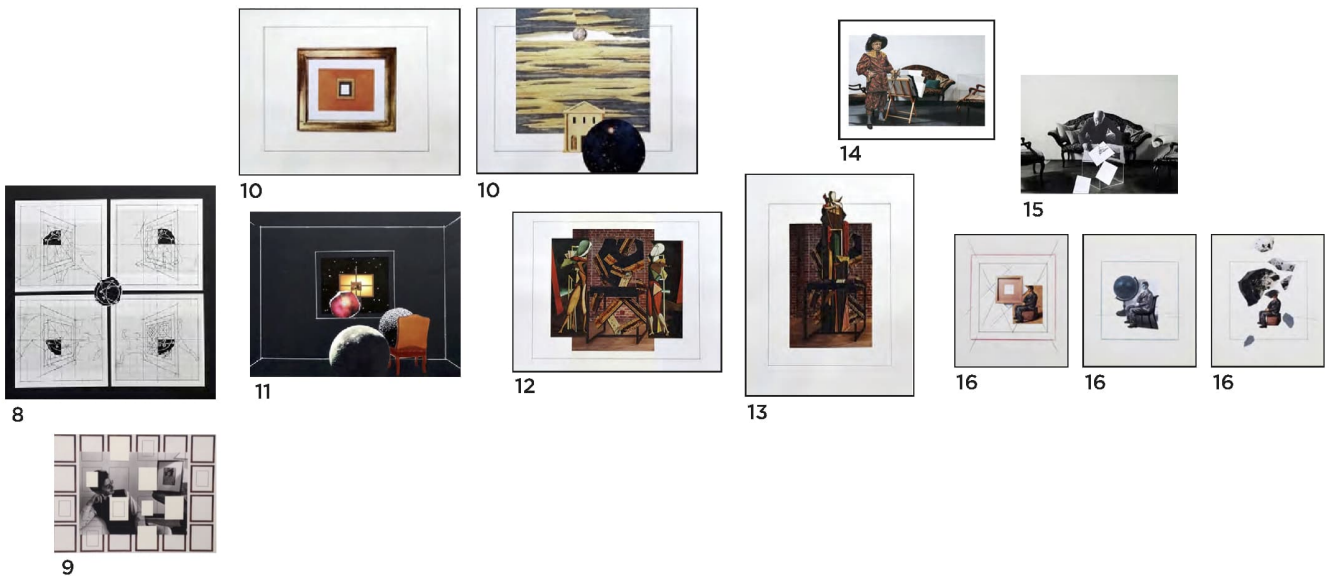
7



7

- 1 **Giulio Paolini**
La caduta nel mondo
[The Fall into the World], 2012
Collage on black paper
Collection of the Artist
- 2 **Giulio Paolini**
Italia Antiqua (Chronos)
[Ancient Italy (Chronos)], 2014-15
Collage on black paper
Collection of the Artist
- 3 **Giulio Paolini**
Et quid amabo nisi quod aenigma est? [What Shall I Love if Not the Enigma?], 2016
Collage on black paper
Collection of the Artist
- 4 **Giulio Paolini**
Arianna abbandonata
[Abandoned Arianna], 2015
Collage on black paper
Collection of the Artist
- 5 **Giulio Paolini**
Chronos (1538-1920), 2014-15
Pencil and collage on paper
Collection of the Artist
- 6 **Giulio Paolini**
Autoritratto nudo
[Naked Self-Portrait], 2012
Collage on black paper
Collection of the Artist
- 7 **Giulio Paolini**
Arianna, 2015
Collage on paper
Collection of the Artist

DINING AREA



8 Giulio Paolini
Les duels à la mort
 [The Duels to the Death], 2013
 Collage on black paper
 Collection of the Artist

9 Giulio Paolini
Senza titolo
 [Untitled], 2008
 Collage and pencil on paper
 Private collection,
 Zurich, Switzerland

10 Giulio Paolini
Dalla "Partenza degli Argonauti"
 [From "The Departure of the
 Argonauts"], 2015
 Pencil and collage on paper
 Collection of the Artist

11 Giulio Paolini
Il cavaliere solitario
 [The Lonely Knight], 2014
 White pencil and collage
 on black paper
 Collection of the Artist

12 Giulio Paolini
Ettore e Andromaca
 [Hector and Andromache], 2016
 Pencil and collage on paper
 Collection of the Artist

13 Giulio Paolini
Il grande metafisico
 [The Great Metaphysician], 2015
 Pencil and collage on paper
 Collection of the Artist

14 Giulio Paolini
Studio per "Sala d'attesa"
 [Study for "Waiting Room"], 2011-12
 Collage on digital print on paper
 Collection of the Artist

15 Giulio Paolini
Studio per "Sala d'attesa"
 [Study for "Waiting Room"], 2011-12
 Collage on digital print
 Collection of the Artist

16 Giulio Paolini
In visita
 [On Visit], 2015
 Pencil, red pencil, blue pencil
 and collage on paper
 Collection of the Artist